



Strolling through Barcelona in the 1960's, designer Miguel Milá found an abandoned opal globe in front of a glass factory. He picked it up, and over the years, it became the heart of this large family. As its name suggests, Cesta (Spanish for "basket"), was designed to hold this fragile piece.

Inspired by the traditional lanterns that light up homes along the coast, rural estates and open terraces, Cesta is one of the most iconic lamps created by Miguel Milá. This lamp object can be picked up and carried easily, ideal for both tabletops and floors. The opal glass shade is supported by a beautiful cherry wooden structure. It is produced manually by European craftsmen, using traditional steam bending techniques for the wood, which is delicately polished and sturdily put together. Despite its peculiarity (or rather because of it) the lamp's design and function remain contemporary.

The Cesta family is made up of the Cesta, Cestita, Cestita Batería, Cestita Alubat, Cesta Outdoor, Cesta Metálica, and Cestita Metálica table lamps, the Wally Cesta and Wally Cestita wall lamp, and the Globo Cesta and Globo Cestita pendant lamps, symbols of Mediterranean warmth and well-being. These masterpieces by Miguel Milá are part of our Design Classics collection, a series of objects created throughout the Modernist era.

General description:

Cherry wood structure.

White opal glass lampshade.

Electric cable length: 2,25 m / 88.6"

Approximate weight (unpacked):

2,7 kg / 5.9 lb

Technical information:

European version: Dimmable light source included

American version: Recommended dimmable light source (not included)

LED bulb: 11 W / 1.521 lm / 2700 K

E27 - E26 / Max. hgt. 130 mm / 5.1"

Includes dimmer (dimmable light source required).

Suitable only for indoor use.

Always use the light source recommended or equivalent.

Input voltage: 100, 120, 230 Vac.

(50 Hz / 60 Hz). According to destination

Cesta

Miguel Milá. 1962
Table Lamps



SANTA & COLE

Regulations:

European version
UNE-EN 60598
UNE-EN 55015
UNE-EN 60529

American version
Dry location only
UL-153
E-352592

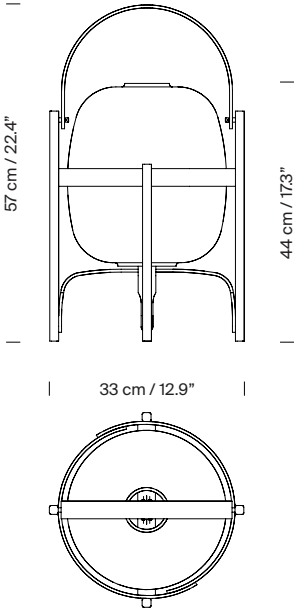
Maintenance:

Clean with a smooth cloth. Do not use ammonia, solvents or abrasive cleaning products.

Others:

The lamp is delivered in one package.
The assembly instructions are delivered with the product.

Model:



Collection:

Table lamps



Cesta



Cestita



Cesta Batería



Cesta Metálica



Cestita Metálica

Pendant lamps



Globo Cesta



Globo Cestita

Wall lamps (Outdoor)



Wally Cesta



Wally Cestita

Outdoor lamps



Cesta exterior



Cestita Alubat